

# THE CASE FOR AN ACCOUNTABLE HEALTH COMMUNITY

## 9 SOCIOECONOMIC FACTORS

- Access to healthy foods
- Access to preventive care
- Employment equality
- Connected/accessible transportation
- Livable median wage
- Quality education
- Relationships/support network 
- Safe/affordable housing
- Safe community

**INFLUENCE**


There are multiple factors that impact our health. By working together to address them, we can improve quality of life and reduce the number of deaths linked to chronic disease in our community.

## 4 HEALTH BEHAVIORS

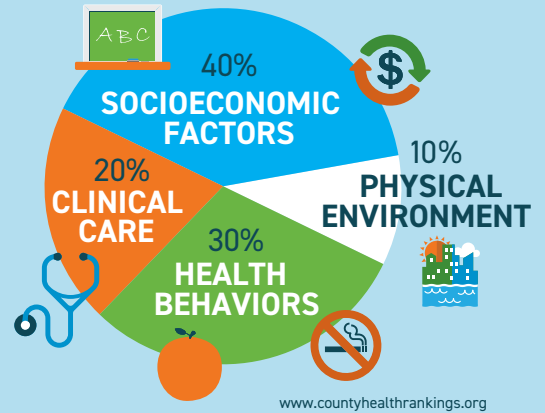
- Lack of physical activity
- Poor diet
- Substance use & binge drinking
- Tobacco use 

**LEAD TO**

## 4 CHRONIC DISEASES

- Cancer
- Heart disease and stroke
- Lung disease 
- Type 2 diabetes

**CAUSING**



THESE SOCIOECONOMIC FACTORS, HEALTH BEHAVIORS AND CHRONIC DISEASES IMPACT OUR QUALITY OF LIFE.

94,000 OR 1 IN 6

Douglas County residents report having to limit their daily activities due to emotional, physical or mental issues.



**DOUGLAS COUNTY** 41% of these residents live in NE and SE Douglas County.

**78%**  
OF EARLY DEATHS IN

**DOUGLAS COUNTY\***

\*Leading causes of death linked to chronic diseases



TO LEARN MORE, CONTACT:

Sarah Sjolie, Chief Executive Officer  
sarah@livewellomaha.org • 402-915-1356